



**Liberty
Research
School**

TRAINING, OUTREACH, AND CONSULTANCY



CONTENTS

INTRODUCTION

03

An introduction from the CEO and the Head of Liberty Research School.

LEADERSHIP

04

Full suite of leadership training and development to support exceptional SEND education.

CLASSROOM PRACTICE

10

Full suite of training and development to support exceptional practice in the classroom.

THERAPEUTIC

18

Full suite of training and development to support therapeutic practice in education.

ENVIRONMENT

21

Full suite of training and development to support SEND-friendly environments.

NETWORKS

26

Full suite of networks to support professional development and peer engagement.

OUTREACH AND CONSULTANCY

36

Outreach support and consultancy, including bespoke delivery on request.

Welcome to The Liberty Research School!

We are committed to filling the critical gap in autism research by focusing on the real-world experiences and needs of autistic children and young people.

We are dedicated to ensuring that our research directly informs the educational practices and policies that impact students, informing learning and professional development for all.

As part of this mission, we are continually developing our training offer, including the Improving Teaching Programme (ITP) and Autism Leadership programmes, to provide educators with the tools they need to support autistic students effectively.

We are proud to be active partners with leading institutions, such as, the University of Reading, University of Chichester, University of East London, Birmingham Newman University, Birmingham University, and Warwick University, collaborating to advance autism research, training, and development.

One of the exciting projects our schools are involved in, is the BrainWaves project, collaborating with the University of Oxford to improve mental health support for students. We are bringing our knowledge and valuable insights from autistic young people, regarding the resources that have been developed and shared, to contribute to the creation of more effective mental health support within schools.

At Liberty Research School, we offer autism training and consultancy to support a range of needs within the sector.

Nic

Chrissie

Dr Nic Crossley
Chief Executive Officer

Chrissie Johnston
Head of Research School

The background features three large, overlapping circles. A purple circle is positioned in the upper right, a green circle is in the lower right, and a red circle is in the lower left. The word "LEADERSHIP" is centered within the purple circle.

LEADERSHIP

Subject Leads Training

Overview

This bespoke course is designed specifically for subject leads and aspiring leads in Special Education. It aims to provide you with the essential tools and knowledge to enhance your understanding and implementation of a SEND-appropriate curriculum. Here's what you can expect to learn:

- 1. Understanding the Overarching Goals and Philosophy of the Curriculum:** Gain insights into the fundamental principles and objectives that drive our curriculum, ensuring a cohesive and comprehensive educational experience for all students.
- 2. Learning about SEND-friendly Approaches to Curriculum Development:** Delve into the LAT Trust's unique approach to curriculum development and consolidate your understanding of the LAT Curriculum policy to align your teaching strategies with our educational standards.
- 3. Exploring Sequencing and Schema in Curriculum Development:** Discover the importance of sequencing and schema in curriculum planning and learn how to structure your lessons to build on prior knowledge effectively.
- 4. Understanding Different Types of Knowledge:** Differentiate between various types of knowledge, including procedural, declarative, and conceptual, and understand how to integrate them into your teaching practices.
- 5. Learning about Resources that Can Support Your Teaching:** Explore a range of resources available to support your teaching, from digital tools to traditional materials, and learn how to utilise them to enhance student learning.
- 6. Evaluating Your Curriculum Subject Area:** Develop the skills to critically evaluate your curriculum subject area, ask key questions, and make informed decisions to improve educational outcomes.
- 7. Identifying Misconceptions in Learning:** Understand the importance of identifying and addressing misconceptions in student learning to ensure a solid understanding of knowledge.
- 8. Evaluating the Curriculum by External Providers:** Learn how the curriculum is evaluated by external providers and use this knowledge to meet and exceed external standards and expectations.
- 9. Planning for Ongoing Professional Development:** Plan for your ongoing professional development to continuously improve your teaching practices and support the effective implementation of the curriculum.

Who is this course for?

Subject Leads / Aspiring Subject Leads

Timing / Duration

Half day / Series of Twilights

Delivery

On site or online via TEAMS

Training Lead

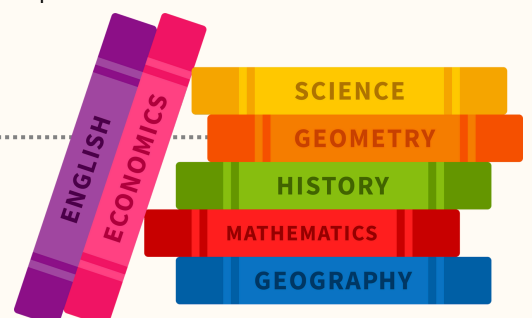
Jo Galloway, Director of Education, PhD Candidate, and Autism Specialist

Cost

£200 per person

How to Book

More information can be obtained by emailing:
ResearchSchool@libertytrust.org.uk



Postgraduate Certificate in Professional Education (Autism Leadership)

Overview

Liberty Academy Trust has developed a high-quality training programme which supports Autism Leadership in education. This face-to-face taught programme supports completion of the Postgraduate Certificate in Professional Education, through the University of Warwick, with access to quality research and practice.

In order to bring the learning to life, hear from leading speakers in their field. Past speakers have included parent specialist and co-author of *Square Peg*, Ellie Costello; curriculum specialist, Dr Megan Dixon; and safeguarding specialist, Dr Carly Danesh.

Mandated Units:

- Philosophy of Education
- Child Development Theory
- Neuroscience and Education
- Safeguarding Autistic Learners

Optional Units:

- Developing an Inclusive Culture
- Curriculum, Pedagogy, and Assessment
- Promoting a Quality of Life
- Supporting Communication in the Curriculum

Who is this course for?

Those interested in Autism Leadership and who have an undergraduate degree in any discipline.

Timing / Duration

12 months.

4 x full day mandated sessions, plus a minimum of two optional full day sessions (maximum four sessions)

Delivery

Face to face with a June start date each year.



Postgraduate Certificate in Professional Education (Autism Leadership)**Assignment Requirements:**

Two assignments of 6,000 words each - November and June submission.

Certification

Successful attendance of the LAT training sessions and successful submission of two assignments to Warwick University leads to a Postgraduate Certificate in Professional Education.

Training Lead

Dr Nic Crossley, CEO and Honorary Teaching Fellow at the University of Warwick

How to Apply

All applicants need to book through LAT as below and also apply directly to Warwick University and meet their admissions criteria before a formal offer is given. Guidance will be provided by LAT to support the direct application process.

Applicants must have an undergraduate degree to be considered.

Cost

£3,500 per person (includes cost of resources, course books, assessment and accreditation)

How to Book

More information can be obtained by emailing:
ResearchSchool@libertytrust.org.uk



Safeguarding and Child Protection Training in Specialist Settings

Overview

Safeguarding and promoting the welfare of children is everyone's responsibility in school. All staff must understand the different types of harm and abuse, be alert to the warning signs of harm or abuse, including online/technology assisted harms, and be able to identify children who may need Early Help.

In special schools, safeguarding and child protection can offer more complex issues.

All staff must understand their role and responsibilities in safeguarding, adhering to law, statutory guidance and individual school / Trust policies.

In the training we will cover:

- Recognising, responding to and reporting concerns
- Building a culture of safeguarding
- Safer recruitment
- Developing or implementing safeguarding policies and procedures
- Information sharing
- Local child protection procedures
- Relevant legislation and guidance.

Who is this course for?

All Staff.

Timing / Duration

3 hours

Delivery

Online via TEAMS

Training Lead

Nic Law, Director of Safeguarding and co-author of the DSL Standards

Cost

£150 per school

How to Book

More information can be obtained by emailing:
ResearchSchool@libertytrust.org.uk



Delivering Effective Line Management Workshop

Overview

The purpose of this workshop is to equip school leaders and line managers with the skills and strategies needed to manage their teams effectively, fostering a supportive and productive school environment.

This workshop offers six key areas of focus:

- Understanding the role of the line manager in a school setting
- Exploring how effective line management contributes to a positive school culture and staff wellbeing
- Providing strategies for leading and motivating staff
- Discussing techniques for resolving conflicts and managing difficult conversations
- Setting goals and expectations, including monitoring and feedback
- Understanding the appraisal process and addressing underperformance

Who is this course for?

School leaders, middle leaders and all those with line management responsibilities.

Timing / Duration

Full day or series of twilights.

Delivery

Face-to-face or online via TEAMS.

Training Lead

Andy Richardson, Head of HR

Cost

Face to face £1,000 per school (up to 15 attendees)

Online £250 per person.

How to Book

More information can be obtained by emailing:
ResearchSchool@libertytrust.org.uk



The background features three large, overlapping circles. A purple circle is positioned in the upper right, a green circle is in the lower right, and a red circle is in the lower left. The text 'CLASSROOM PRACTICE' is centered horizontally across the purple circle.

CLASSROOM PRACTICE

Autism Awareness in Education

Overview

This is a bespoke training programme delivered online.

The aims of the programme are:

- Drive whole school autism awareness and culture change within education settings.
- Develop a consistent understanding and delivery of good autism practice in whole school settings.
- Embed the use of research-based, practical tools across a whole setting.
- Achieve better wellbeing and learning outcomes for autistic children and young people.

There are four units:

- What is autism?
- Supporting social understanding and communication
- Sensory integration in the classroom
- Increasing engagement and reducing anxiety.

Who is this course for?

All staff with an interest in autism or who work with autistic children and young people. It is designed for those who are relatively new to working with autistic children or who are keen to refresh their understanding of the basics.

Timing / Duration

The exact time can vary according to discussion that takes place in the sessions.

90 minutes for session 1

60 minutes for sessions 2-4

Delivery

Online via TEAMS.

Training Lead

Jo Galloway, Director of Education, PhD Candidate, and Autism Specialist

Cost

£125 per person

How to Book

More information can be obtained by emailing ResearchSchool@libertytrust.org.uk



The Autism Professional Training Programme

Overview

This bespoke modular programme consists of a growing number of courses that last between 1 and 2 hours.

These courses are designed to build on obtained knowledge with more specific strategies and greater depth of understanding. This course enhances the ability of staff to implement effective interventions and support strategies tailored to individual needs, improving outcomes for autistic individuals.

These courses are being developed by professionals across the Trust according to need. Topics include:

- Ambition and Inclusion
- Autism and Toileting
- Autism and Cognitive theories
- Structured Teaching
- Practical Classroom Strategies to support Autistic learners
- Autism and Wellbeing
- Safeguarding and Autism

This is not an exhaustive list and the Liberty Autism Training working party is responsive to need and able to draw on expertise and develop specific and bespoke sessions on request.

Who is this course for?

Individuals who have completed the Autism Awareness training and would like to deepen their knowledge further.

Timing / Duration

1-2 hours per course

Delivery

Online via TEAMS

Training Lead

Jo Galloway, Director of Education, PhD Candidate, and Autism Specialist

Cost

£75 per person, per course.

Five courses for £250 per person.

How to Book

More information can be obtained by emailing:
ResearchSchool@libertytrust.org.uk



Improving Teaching Programme (CPD Accredited)**Overview**

The Improving Teaching Programme is a bespoke training offer designed to support inclusive practice in the classroom. Written from a SEND-friendly pedagogical approach, it is of particular relevance to those teaching autistic learners.

There are five sessions:

- Understanding How We Learn
- Pedagogy into Practice
- Dialogic Teaching and Oracy
- Executive Function and Cognitive Load
- Supporting Metacognition and the Power of Mindset

**Who is this course for?**

Teachers, trainee teachers, instructors, TAs, Learning Mentors, families and those interested in the craft of teaching.

Timing / Duration

5 x 1hr sessions.

Delivery

Fortnightly sessions delivered online through TEAMS.

Programme runs three times a year, starting in September, January, and May.

Certification

This course is CPD accredited through CPD UK; attendance at all 5 sessions is required to receive a certificate.

Training Lead

Dr Nic Crossley, CEO and Honorary Teaching Fellow at the University of Warwick

Cost

£150 per person

How to Book

More information can be obtained by emailing:
ResearchSchool@libertytrust.org.uk



Maximising the Impact of Teaching Assistants (MITA) Training

Overview

Informed by the research of Rob Webster and Roy Blatchford at UCL, MITA stands for Maximising the Impact of Teaching Assistants, a training programme that helps schools improve how teaching assistants (TAs) are used in the classroom. The programme is designed to improve pupil outcomes by exploring how the appropriate deployment of non-teaching staff has the power to accelerate or hinder pupil progress and the pivotal role that leaders play in determining this.

In Liberty schools we refer to Teaching Assistants as Learning Mentors to denote the importance of mentoring learners to become independent rather than assisting but the term Teaching Assistant is interchangeable in this training.

The training has the following aims:

- Explore what the research says about Teaching Assistants (TAs)
- Clarify why the TA role is a whole school leadership issue
- Consider and define an alternative role for TAs in your setting, so that pupil progress can be accelerated, and the impact of TAs can be quantified
- Develop a strategic framework for sustainable change and increased effectiveness

Who is this course for?

Principals and Senior Leaders

Timing / Duration

1 day or 2 twilight sessions

Delivery

Face to face at host schools.

Training Lead

Dr Nic Crossley, CEO and Honorary Teaching Fellow at the University of Warwick
Jo Galloway, Director of Education, PhD Candidate, and Autism Specialist

Cost

£1,000 per school (up to 15 attendees)

How to Book

More information can be obtained by emailing:
ResearchSchool@libertytrust.org.uk



Maximising Your Impact on Learning**Overview**

Informed by the research of Rob Webster and Roy Blatchford at UCL, Maximising Your Impact on Learning acts as the follow-up session to the MITA training for Senior Leaders and is designed to support Teaching Assistants and Learning Mentors enhance their impact on learning.

Offering an insight into the research and practical approaches to develop classroom practice, colleagues are encouraged to take a critical view, whilst also sharing solutions with like-minded peers.

The training has the following aims:

- To understand what the research says about Teaching Assistants
- To unpick some learning theories and how these impact on the role of the Teaching Assistant in the classroom
- To explore practical approaches to support the development of a 'TA Toolkit'

Who is this course for?

Learning Mentors and TAs whose Senior Leaders have already attended the Senior Leader (MITA) training.

Timing / Duration

1 day or 2 twilight sessions

Delivery

Face to face at host schools

Training Lead

Dr Nic Crossley, CEO and Honorary Teaching Fellow at the University of Warwick
Jo Galloway, Director of Education, PhD Candidate, and Autism Specialist

Cost

£1,000 per school (up to 25 attendees)

How to Book

More information can be obtained by emailing:
ResearchSchool@libertytrust.org.uk



Digital Literacy for SEND Educators

Overview

This bespoke course is designed for all staff to improve their digital literacy. This course aims to provide you with the essential tools and knowledge to enhance your use of the digital technology and systems available to support learners with SEND.

The course will be mix and match where you can complete modules relevant to your knowledge level and role type.

1) Foundational Digital Skills

- Microsoft Excel:
 - Basic: Navigating spreadsheets, formatting, and basic functions and formulas
 - Advanced: Pivot tables, advanced functions and formulas, graphs

2) Digital Communication and Collaboration

- Getting started with SharePoint
- Getting started with Teams
- SharePoint intermediate
- Class Teams intermediate
- Deep Dive into Assignments
- Deep Dive into Class Notebook

3) Cybersecurity and Digital Safety

- Cybersecurity
- Digital Safety

4) Pedagogical Integration of Ed Tech

- Microsoft Whiteboard /Visualisers: Interactive teaching with digital whiteboards
- Canva
- Lyfta
- Classroom Cloud

5) Accessibility and Inclusion

- Built-In Accessibility Tools:
 - Using dictation, magnifier, and contrast settings in Windows
 - Learning Accelerators – Reading Progress, Maths Progress, Reflect

6) Assessment and Feedback

- Forms for Quizzes and Surveys: Creating assessments, collecting feedback, and analysing results
- Insights in Microsoft Teams: Monitoring student engagement and performance trends

7) Artificial Intelligence

- The benefits and risks of AI, particularly in terms of ethical dilemmas and security concerns
 - AI in educational settings, recognising both its opportunities and challenges
 - AI Tools: Microsoft Co-Pilot, Chat GPT, other tools.
-

The background consists of three overlapping circles. A large purple circle is positioned in the upper right, a large green circle is in the lower right, and a large red circle is in the lower left. The word "THERAPEUTIC" is centered within the purple circle.

THERAPEUTIC

Supporting Newly-Diagnosed Autistic Children and Young People

Overview

This training is designed to equip educators with the knowledge, skills and confidence to support newly diagnosed autistic children in understanding their diagnosis. This training will include opportunity to consider:

- Terminology: why words matter
- Creating a positive supportive environment
- Understanding my autism - how to talk about strengths and differences
- Supporting emotional wellbeing
- Key adults
- Recommended published resources and guidance on developing bespoke resources.
- Involving families.
- Dealing with challenging questions.

The training has the following aims:

For participants to:

- Learn how to use respectful, empowering, and accurate language
- Learn strategies for building an inclusive supportive classroom environment.
- Ensure that autistic children feel safe, valued, and understood.
- Help children understand their unique qualities and develop a positive understanding of autism
- Build strong home-school partnerships.
- Receive practical advice and strategies for addressing personal topics.

Who is this course for?

This course is for educators working with a newly diagnosed autistic child.

Timing / Duration

Half day or 3 twilight sessions

Delivery

Face to face / online TEAMS

Cost

£150 per person.

Training Lead

Jo Galloway, Director of Education, PhD Candidate, and Autism Specialist
Therapeutic Specialists at a Liberty School, as available

How to Book

More information can be obtained by emailing:

ResearchSchool@libertytrust.org.uk

Supporting Behaviour Management in Schools

Overview

This course aims to equip staff with the skills and strategies to support learners with SEND, manage behaviours that challenge, and promote a positive learning environment for all.

The training has the following eight key areas of focus:

- Understanding the principles of behaviour management and the importance of school culture.
- The role of relationships in behaviour management.
- Strategies for building trust and rapport in students, including low-arousal approaches.
- Trauma-informed and trauma-aware - understanding the factors that may contribute to behaviours that challenge.
- Recognising signs of agitation and distress.
- Effective communication strategies for calming and deescalating situations.
- The importance of reflection and debrief.
- Monitoring and evaluation for effective behaviour reporting.

Who is this course for?

Teachers, non-teaching staff and school leaders.

Timing / Duration

Full day workshop or 4-8 twilight sessions.

Delivery

Face-to-face in host schools or online via TEAMS.

Training Lead

Abbie Stearman, Behaviour Lead, Thames Valley School

Cost

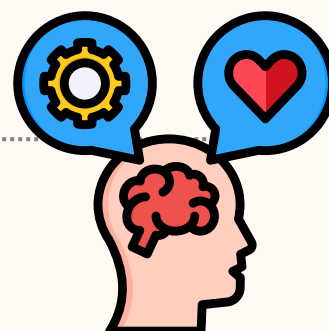
Face-to-face: £250 per person or £1,000 per school (up to 15 attendees)

Online: £100 per person

How to Book

More information can be obtained by emailing:

ResearchSchool@libertytrust.org.uk



The background features three large, overlapping circles. A purple circle is positioned in the upper right, a green circle is in the lower right, and a red circle is in the lower left. The word "ENVIRONMENT" is centered within the purple circle.

ENVIRONMENT

Good Estates Management Workshop

Overview

The Good Estate Management for Schools (GEMS) tool provides guidance to help schools manage their buildings and land effectively. Its purpose is to ensure a safe, healthy, and sustainable school environment by supporting strategic planning, resource management, and maintenance practices.

This workshop offers five key areas of focus:

- Introduction to GEMS, its purpose and benefits in schools
- Strategic planning and how best to use the tool
- Resource Management, including maintenance and sustainability practices
- Health and Safety
- Compliance and Regulations

Who is this workshop for?

Sites and facilities staff and other operational leads, including those responsible for managing school buildings and land.

Timing / Duration

Half day workshop.

Delivery

Face to face at schools or online via TEAMS.

Training Leads

Lisa Saunders, Head of Strategic Estates and Project Management
Chris Rossiter, Director of Governance and Compliance

Cost

£200 per person

How to Book

More information can be obtained by emailing:
ResearchSchool@libertytrust.org.uk



Developing an Autism-Friendly Environment

Overview

This course is designed to equip school leaders with the knowledge and strategies needed to create an inclusive and supportive environment for autistic students.

The course offers a strategy for ensuring leadership commitment, policy development, and practical implementation.

This course offers five key areas of focus:

- Understanding autism and how this may impact on learning and development in children and young people.
- The importance of an inclusive culture and the role of leaders in fostering this.
- Developing policies that support inclusion.
- The autism-friendly classroom, including sensory integration and support.
- The importance of pupil voice in developing autism-friendly environments.

Who is this course for?

Senior leaders, including SENCOs, Middle Leaders, classroom teachers and in-class support.

Timing / Duration

Full day or 5 twilight sessions.

Delivery

Face-to-face or online via TEAMS.

Training Lead

Jo Galloway, Director of Education, PhD Candidate, and Autism Specialist

Cost

£150 per person or £650 per school (up to 8 attendees).

How to Book

More information can be obtained by emailing:
ResearchSchool@libertytrust.org.uk



Health and Safety for Senior Leaders in Special Schools

Overview

This course is designed to equip senior leaders in special schools with the knowledge and skills necessary to ensure a safe and healthy environment for students, staff, and visitors. It focuses on the unique challenges and responsibilities associated with managing health and safety in special education settings.

This course offers eight key areas of focus:

- HSE Managing Health and Safety (HSG65) framework and application to Special Schools.
- Creating and implementing health and safety policies and procedures.
- Identifying and assessing risks specific to special schools.
- Promoting a culture of safety within the school community.
- Strategies for continuous improvement in health and safety practices, including monitoring and evaluation.
- The importance of valid and up-to-date staff training and development.
- Developing and implementing emergency response plans.
- Working with stakeholders to promote health and safety through clear and effective communication.

Who is this course for?

Senior Leaders, SBMs, Facilities Managers and Site Supervisors, School Governors and Trustees.

Timing / Duration

Full day or 4-8 twilight sessions.

Delivery

Face-to-face or online via TEAMS.

Training Lead

Lisa Saunders, Head of Strategic Estates and Project Management

Cost

£150 per person.

How to Book

More information can be obtained by emailing:
ResearchSchool@libertytrust.org.uk



Risk Assessments in Special Schools

Overview

The purpose of this workshop is to equip senior leaders, teachers, and support staff in special schools with the knowledge and skills necessary to develop and implement effective risk assessments.

This workshop aims to ensure the safety and wellbeing of students, staff, and visitors by identifying potential hazards and mitigating risks specific to special education settings.

The workshop will focus on five key areas:

- Understanding legal requirements, and the roles and responsibilities of school leaders and staff.
- Understanding and conducting risk assessments, including a specific focus on common risks in special schools.
- Implementing control measures, including strategies for mitigation.
- Monitoring and reviewing risk assessments and the importance of regular review.
- Promoting a safety culture and the importance of involving all stakeholders in the risk assessment process.

Who is this workshop for?

Senior Leaders, including SENCOs, Health and Safety Officers, Facilities Managers and Site Supervisors, Governors and Trustees.

Timing / Duration

Half day or two twilight sessions.

Delivery

Face-to-face or online via TEAMS.

Training Lead

Lisa Saunders, Head of Strategic Estates and Project Management

Cost

£200 per person.

How to Book

More information can be obtained by emailing:
ResearchSchool@libertytrust.org.uk





NETWORKS

We know that networks that focus on specialist provision can sometimes be challenging to find. That is why, at Liberty, we open our networks to external partners and schools so that peer support and policy updates can be accessed.

Our high-quality networks are underpinned by principles of delivering an exceptional education for learners with SEND, with a particular focus on autistic learners.

Networks are generally hosted three times a year online via TEAMS and members also have access to associated shared resources.

Cost

Schools and external partners can access one network for £75 per year per person.

Alternatively, schools and external partners can access five networks for £300 per year per user.

How to Book

More information can be obtained by emailing:
ResearchSchool@libertytrust.org.uk

Networks

Digital Champions Network

The aim of the Digital Champions Network is to provide opportunities for networking and support. It is a collaborative platform for Digital Champions to share best practices, resources, and support each other in their roles.

The aim of the network is to enhance the use of technology for both staff and students, promote professional development, and foster a community of best practice.

Who is this Network for?

Digital Champions in schools and those interested in enhancing digital opportunities.

Frequency

Meetings are held termly online via TEAMS.

Network Chair

Lisa Thompson, Head of Digital, Data, and Technology and Member of the DfE Star Chamber Scrutiny Board



Networks

Curriculum and Teaching Network

The aim of the Curriculum and Teaching network is to develop consistency in quality and approach, continually raise standards and support regular collaboration.

The networks aim to build teacher expertise in curriculum, deliver contextually tailored professional learning opportunities, and foster evidence-based practices for collective efficacy. These meetings also focus on developing and sharing high-quality pedagogical practices and providing leadership opportunities.

Curriculum network leaders collaborate with members to set goals, facilitate meetings, share resources, and maintain action trackers.

Members are expected to prepare, attend regularly, contribute in meetings, and apply professional learning to improve student outcomes.

Who is this Network for?

Curriculum and Teaching Leads, Heads of Subject and those with whole-school responsibilities.

Frequency

Meetings are held termly online via TEAMS.



Network Chair

Jo Galloway, Director of Education, PhD Candidate, and Autism Specialist

.....

Networks

Designated Safeguarding Leads Network

The DSL network is for both Designated Leads and Deputy DSL's, to share knowledge and best practice, guidance and policy updates and develop partnership working.

The network offers facilitated time for key updates, discussion, group supervision and reflective practice.

Who is the Network for?

DSLs, Deputy DSLs, Safeguarding Link Governors, Safeguarding Trustees.

Frequency

Meetings are held termly online via TEAMS.

Network Chair

Nic Law, Director of Safeguarding and co-author of the DSL Standards



Networks

Attendance Network

The Attendance network is designed to help improve pupil attendance by providing opportunities to share best practice, address specific queries and challenges and provide support and guidance.

Network time is utilised primarily for training and technical support however there are opportunities for case discussions and guidance and policy updates.

Who is this Network for?

School Attendance Champions and Attendance Officers

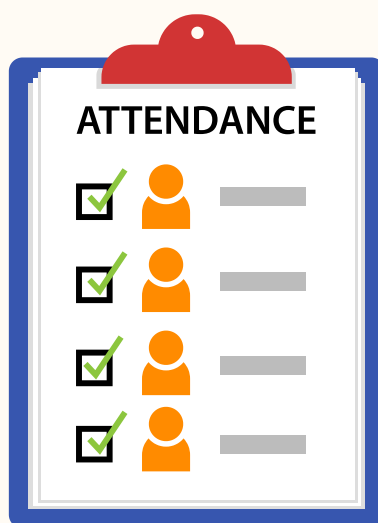
Frequency

Meetings are held termly online via TEAMS.

Network Chair

Nic Law, Director of Safeguarding and co-author of the DSL Standards

Lisa Thompson, Head of Digital, Data, and Technology and member of the DfE Star Chamber Scrutiny Board



.....

Networks

SENCO Network

The aim of the SENCO Network is to give SENCOs a voice in guiding policy and practice, provide networking and support opportunities, and create a collaborative platform for sharing best practices and resources.

This enhances support for students with special educational needs, promotes professional development, and fosters a community of practice.

Who is the Network for?

SENCOs and aspiring SENCOs

Frequency

Meetings are held termly online via TEAMS.

Network Chair

Gemma Buley, Principal, NPQ SEND Facilitator, and Autism Specialist



.....

Networks

Autism Leads Network

The aim of the Autism Lead Practitioners Network is to allow our Autism Leads to lead the way in guiding policy and best practice in relation to the support of autistic pupils in our schools.

The meetings provide networking and support opportunities, and ensure they are confident in leading on autism-related advice, drawing on research, coaching colleagues, consulting on learning environments, and providing training.

Who is this Network for?

Autism Lead Practitioners and Autism Resource Base Leads.

Frequency

Meetings are held termly online via TEAMS.

Network Chair

Jo Galloway, Director of Education, PhD Candidate, and Autism Specialist



Networks

Sustainability Network

The purpose of the Sustainability Network is to support the development of a more sustainable and equitable future through accessible environments that are environmentally sustainable and centred around well-being and growth.

There are five key areas of focus for the network:

- Carbon footprint
- Resource use
- Waste management
- Green space development
- Project engagement

Who is this Network for?

School sustainability leads, aspiring leads and those who are interested in sustainability and inclusion goals at all levels.

Frequency

Meetings are held termly online via TEAMS.

Network Chair

Paul Scales, Principal and Liberty Sustainability Lead



Networks

Research Network

The purpose of the Research network is to provide those with a passion for research the opportunity to come together, collaborate with researchers, and help shape the future of education for autistic individuals.

The meetings focus on identifying and supporting practitioner action-research in schools, as well as identifying opportunities to share and present research findings with university partners - and the sector more widely.

Who is this Network for?

Research associates in schools and those undertaking postgraduate study or research.

Frequency

Meetings are held termly online via TEAMS.

Network Chair

Chrissie Johnston, Head of Research School and PhD Candidate





OUTREACH AND CONSULTANCY

At Liberty, our aim is to deliver an exceptional education for all our learners, but we want our reach to extend beyond that - particularly as the sector is struggling to access timely and appropriate support for learners with SEND.


As the reported rates of diagnosed autistic learners in schools continues to rise, we are well placed to offer support and guidance.

The following pages offer examples of outreach and consultancy support currently available and indicative costs; however, bespoke packages are available on request.


Where a bespoke offer is required, average rates are between £500 - £750, per day, plus travel expenses, for each specialist booked.



OUTREACH Overview




School-to-School Support Offer




For the TRUST

- MAT SEND Review
- Training on Inclusion for Senior Leaders
- Maximising the Impact of Teaching Assistants (MITA) Project
- SEND Knowledge Toolkit




For the SCHOOL

- Safeguarding Review
- SEND Review
- Behaviour Review
- Training on *Developing an Ambitious Curriculum for SEND*
- Attendance Review
- Pupil Premium Review




For TEACHERS

- Training on Autism
- Establishing Autism-Friendly Classrooms
- Autism Outreach Support, including individual pupil assessment and strategy support
- Training on Inclusion for ECTs



For NON-TEACHING CLASSROOM SUPPORT

- Training on Autism
- Maximising your impact in the Classroom (to accompany MITA Project)
- TA Development Programme



About the Team

- **Dr Nic Crossley, CEO:**
Co-author of *Inclusion: A Principled Guide for School Leaders*; National SEN Representative for ASCL; Honorary Teaching Fellow for the Centre for Teacher Education at University of Warwick; Peer Reviewer for BERA; Trained PP Reviewer; Trained SEND Reviewer
- **Jo Galloway, Director of Education:** MA in SEND; ex-Executive Principal of schools at the National Autistic Society, Licensed SPELL Trainer; experienced in PP and SEND Reviews
- **Nic Law, Director of Children's Services and Safeguarding:** Trained Parenting Practitioner; Team Teach Trainer; Trained Child Protection Supervisor, ex SLE for Safeguarding and Attendance

Cost

On application

How to Book

More information can be obtained by emailing ResearchSchool@libertytrust.org.uk

PRIMARY Mainstream Support

Overview

This is a face-to-face programme designed for mainstream primary schools in supporting autistic learners. The programme is delivered by autism specialists at Liberty, including senior leaders and therapists, ensuring schools have access to high-quality and expert guidance, leading to an inclusive and supportive environment for staff and students alike.

There are four sessions:

- What is Autism?
- Sensory Integration and the Classroom
- Increasing Engagement and Reducing Anxiety
- Behaviour Management vs Change

Who is this course for?

All staff who work with autistic children; particularly those with less experience.

Timing / Duration

Sessions are delivered in host schools, with a half day for each session

Training Leads

Jo Galloway, Director of Education, PhD Candidate, and Autism Specialist
 Phoebe Edmond, Assistant Educational Psychologist
 Liz Wood, Primary Lead and Digital Champion

Cost

£1,500 per school

How to Book

More information can be obtained by emailing ResearchSchool@libertytrust.org.uk

Establishing an Autism Specialist Classroom or Resource Base

Overview

As autism specialists, we at Liberty are able to offer consultancy support in the setting up of autism specialist classrooms and /or Resource Bases. We can offer a comprehensive range of services to ensure the successful establishment and operation, with a bespoke offer according to need.

A typical offer may include the following:

- Needs assessment based on current capabilities and needs of students
- Development of strategic plan with goals, objectives and timescales, including consultation with key stakeholders
- Guidance on developing an autism-friendly environment, including classroom layout and sensory areas
- Recommendations with regards to specialised furniture, sensory equipment and educational materials
- Support in developing the curriculum offer to ensure accessibility and challenge
- Support in the development and implementation of Individual Learning Plans, Risk Assessments, and Behaviour Support Plans, as appropriate
- Support in the development of autism-friendly policies, including behaviour management
- Supporting / delivering staff training including autism awareness, effective pedagogy and practice, and de-escalation
- Assisting in the development of workshops and training sessions for families in supporting their autistic child
- Providing access to networks and other organisations in order to support continuous improvement
- Offering coaching and /or supervision to key personnel once classroom or resource base established
- Follow-up and support as needed.

Timing / Duration

Consultancy support varies according to need; however, likely time required in the establishment of a classroom or resource base ranges from 40 - 85 days per unit.

Consultant Advisors

Dr Nic Crossley, CEO and Honorary Teaching Fellow at the University of Warwick
Jo Galloway, Director of Education, PhD Candidate, and Autism Specialist

Cost

Day rates apply.

How to Book

More information can be obtained by emailing ResearchSchool@libertytrust.org.uk

School SEND Review

Overview

This is an onsite school review carried out by experienced school leaders, trained by Whole School SEND in carrying out SEND Reviews.

The SEND review is a framework to help schools and reviewers jointly find the best ways to improve the quality of provision for pupils with SEND. It is a collaborative process which includes self-evaluation, supported by a lead with expertise.

The SEND review is designed to support schools in:

- Raising attainment and improving progress
- Improving the quality of provision for SEND pupils
- Reviewing the quality of inclusive practice at a school
- Increasing attendance and reducing exclusions of SEND pupils
- Gaining a better understanding of the well-being of SEND pupils
- Identifying areas for development through self-evaluation
- External validation of a school's evaluation of its provision for SEND pupils.

Purpose

This review is ideal for schools who are keen to have an experienced professional evaluate their current practice and give a fresh perspective. This may lead to exploring new approaches or enhancing current provision, record keeping or reporting.

This review may also support new headteachers in understanding their school and future areas for development. It may also assist schools in responding to recommendations from external bodies if there are concerns about the performance of learners with SEND.

Timing / Duration

Half day off-site preparation, one full day on site, one day write up.

Review Leads

Dr Nic Crossley, CEO and Honorary Teaching Fellow at the University of Warwick
Jo Galloway, Director of Education, PhD Candidate, and Autism Specialist

Cost

£1,500 (includes pre-meet, evaluation of website and policies, one full day on site, plus write-up and report).

How to Book

More information can be obtained by emailing
ResearchSchool@libertytrust.org.uk

MAT SEND Review

Overview

This is an onsite and online review carried out by experienced school leaders, trained by Whole School SEND in carrying out MAT SEND Reviews. As a collaborative process, the MAT SEND Review aims to evaluate the effectiveness of SEND provision across a MAT. It supports self-evaluation, accountability, and strategic planning to improve outcomes for learners with SEND by identifying strengths and areas for development.

There are eight key areas of focus:

- Outcomes for pupils with SEND
- Leadership of SEND
- Quality of teaching and learning
- Working with pupils and parents/carers of pupils with SEND
- Assessment and identification
- Monitoring, tracking, and evaluation
- Efficient use of resources
- Overall quality of SEND provision

Purpose

This review is ideal for MATs who are keen to work with experienced SEND professionals in evaluating current practice for SEND across a group of schools. This may lead to exploring new approaches or enhancing current provisions, record keeping or reporting.

The review process may also support new to role Inclusion or SEND Leads in understanding SEND practice across their MAT and future areas for development. It may also support MATs in responding to recommendations from external bodies if there are concerns about the access, opportunities, and performance of learners with SEND.

Timing / Duration

One day off-site preparation, up to three full days on school sites, two days write up.

Review Leads

Dr Nic Crossley, CEO and Honorary Teaching Fellow at the University of Warwick
Jo Galloway, Director of Education, PhD candidate, and Autism Specialist

Cost

£5,000 (includes pre-meet, evaluation of website and policies, up to three full days on school sites to triangulate practice, plus write-up and report.)

How to Book

More information can be obtained by emailing
ResearchSchool@libertytrust.org.uk

Pupil Premium Review

Overview

This is an onsite school review carried out by experienced school leaders who have experience and training in carrying out Pupil Premium reviews.

As a collaborative process, the Pupil Premium review offers a framework to help schools and reviewers jointly find the best ways to raise the attainment of disadvantaged pupils.

The Pupil Premium review is designed to support schools in:

- Raising attainment and improving progress
- Improving the quality of provision for disadvantaged pupils
- Reviewing the quality of inclusive practice at a school
- Increasing attendance and reducing exclusions for disadvantaged pupils
- Gaining a better understanding of the well-being of disadvantaged pupils; and in particular those who are looked-after
- Identifying areas for development through self-evaluation
- Understanding the demographic of the disadvantaged population in the school
- Externally validating the school's evaluation.

Purpose

This review is ideal for schools who are keen to work with an experienced professional in evaluating current practice and offer a fresh perspective. This may lead to exploring new approaches or enhancing current provisions, record keeping or reporting.

This review may also support new Headteachers in understanding their school and future areas for development. It may also support schools in responding to recommendations from external bodies if there are concerns about the performance of disadvantaged students.

Timing / Duration

Half day off-site preparation, one full day on site, one day write up.

Review Leads

Dr Nic Crossley, CEO and Honorary Teaching Fellow at the University of Warwick
Jo Galloway, Director of Education, PhD Candidate, and Autism Specialist

Cost

£1,500 (includes pre-meet, evaluation of website and policies, one full day on site, plus write-up and report).

How to Book

More information can be obtained by emailing
ResearchSchool@libertytrust.org.uk

Safeguarding Review

Overview

This is an onsite school review carried out by senior leaders who have extensive experience in conducting Safeguarding audits and reviews. The Safeguarding Audit report used during the review is a Liberty Academy Trust tool, which adheres to the CST Safeguarding Review principles co-written by Liberty Director of Safeguarding.

As a collaborative approach, the Safeguarding Review supports school leaders to identify areas of strength and areas for development in safeguarding leadership and practice.

The Safeguarding Review focuses on:

- The Safeguarding 'Culture'
- Reviewing policies, training, practice and records (including systems and processes)
- Pupil voice and staff voice
- Safer Recruitment
- Managing allegations and low-level concerns
- Behaviour and attitudes – crossover with safeguarding (including child on child harms and attendance)
- Safeguarding Leadership and Governance

Purpose

This review is ideal for schools who are keen to have an experienced professional evaluate their current practice and give a fresh perspective. This may lead to exploring new approaches or enhancing current provisions, record keeping or reporting.

This review may also support new Designated Safeguarding Leads in understanding their school and future areas for development. It may also support schools to respond to recommendations from external bodies if there are concerns about safeguarding culture or practice.

Timing / Duration

Half day off-site preparation, one full day on site, one day write up

Review Lead

Nic Law, Director of Safeguarding and co-author of the DSL Standards

Cost

£1,500 (includes pre-meet, evaluation of website and policies, one full day on site, plus write-up and report).

How to Book

More information can be obtained by emailing ResearchSchool@libertytrust.org.uk

Governance Review

Overview

This is a hybrid review carried out by senior leaders who have extensive experience of school and Trust governance. The governance review report covers the key governance and compliance matters that Trust Board, senior leaders and local committees should consider in relation to leading and overseeing SEND provision and outcomes.

As a collaborative approach, the governance review supports school leaders to identify areas of strength and areas for development in SEND leadership and practice.

The Governance Review focuses on:

- Review of policies, procedures, records and training provision
- Pupil and staff voice
- Managing provision and the deployment of resources
- Commissioned and external support
- Reporting requirements

Purpose

The governance review is ideal for schools and trusts who are keen to have an experienced professional evaluate and reflect on their current practice. This may result in changes to how Boards oversee SEND provision in their setting and the requirements on leaders to plan and report on changes to approach.

The review will support Boards and the skills development of members and help to enhance the practice of school management in the deployment and impact of provision and commissioned services.

Timing / Duration

Half day off-site preparation, one full day on site or two half days to coincide with governance meetings, and one further day to develop a plan.

Review Lead

Chris Rossiter, Director of Governance and Operations, author of the SEND governance review guide

Nic Law, Director of Safeguarding and co-author of the DSL Standards

Cost

£1,500

How to Book

More information can be obtained by emailing governance@libertytrust.org.uk

Liberty Academy Trust Transforming Lives Conference

Networking

Workshops

Keynote speakers



You are invited to join us for a day of learning, sharing, and networking at our inaugural Liberty Academy Trust Conference. The theme is 'Transforming Lives' and we will be exploring different approaches and initiatives that have transformed lives within our Schools.

Workshop choices will include: managing home-work balance, delivering a manageable curriculum, improving the safeguarding culture in schools and much more!

[For more information, please click here.](#)

Inspirational Speakers:



Emeritus Professor Des Hewitt

Emeritus Professor Des Hewitt is a Member for Liberty Academy Trust and was previously Head of Primary and Early Years Teacher Education at the University of Warwick.



Margaret Mulholland

Margaret is a Member for Liberty Academy Trust and advisor on SEND policy for the Association of School and College Leaders and Whole School SEND Project Director leading an evaluation for the Education Endowment Foundation.



Dr Nicola Crossley

Dr Nicola Crossley is the current CEO for Liberty Academy Trust. Her specialist interest areas are Autism and Social, Emotional and Mental Health (SMEH).

Date: Tuesday 2nd September 2025
Time: 9am - 4pm
Venue: Online
Attendees: All Education staff
Questions and booking: info@libertytrust.org.uk

www.libertytrust.org.uk



Only £65 if
you book
before 1st June!

Price rises to
£99 after

